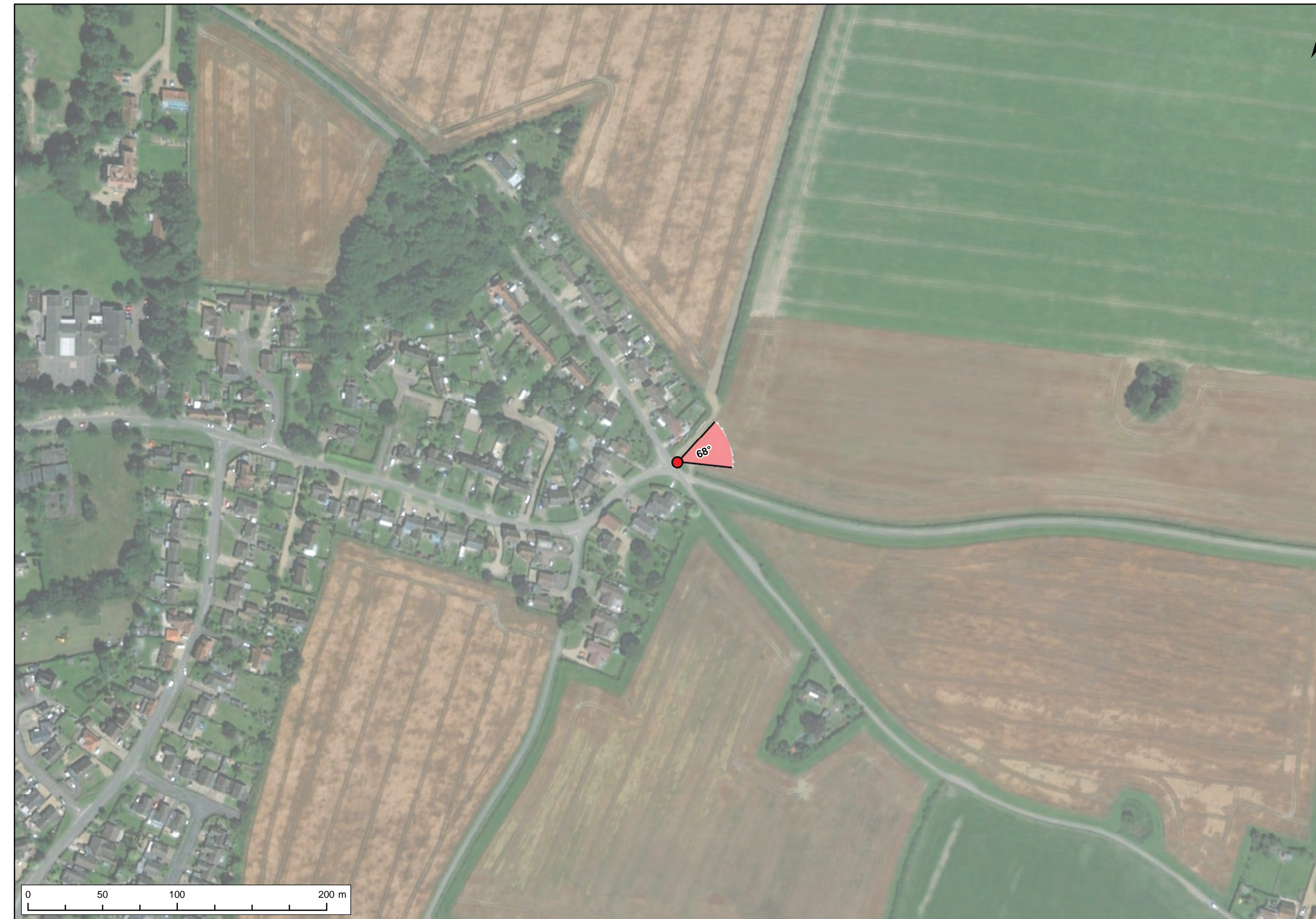
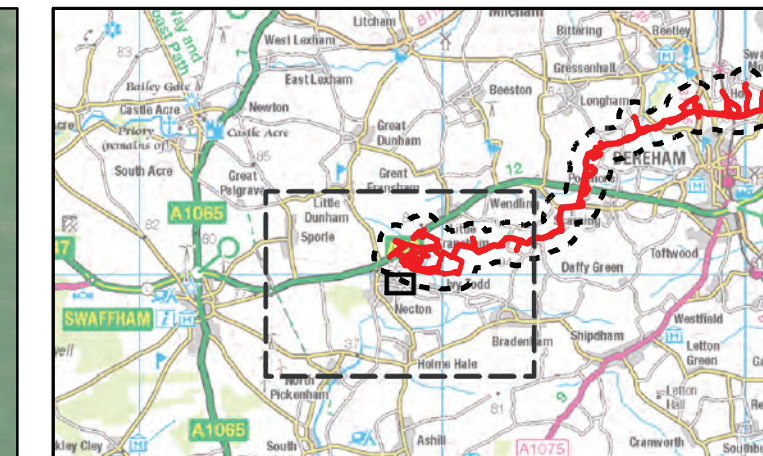


Viewpoint Location Plan Baseline Panorama (90 Degree View)
Scale: 1:25,000



Viewpoint Location Plan (53.5 Degree View)
Scale: 1:2,500



- Legend:
- Norfolk Boreas onshore red line boundary
 - Study area 500m
 - Onshore project substation**
 - Onshore project substation
 - Norfolk Vanguard**
 - Norfolk Vanguard onshore project substation
 - Norfolk Vanguard National Grid substation extension
 - National Grid**
 - National Grid substation extension
 - National Grid new / replacement overhead line tower
 - Existing substation locations**
 - Dudgeon substation
 - Necton National Grid substation
 - Viewpoint**
 - 90 degree field of view viewpoint
 - 53.5 degree field of view viewpoint

Project:	Report:
Norfolk Boreas	Environmental Statement

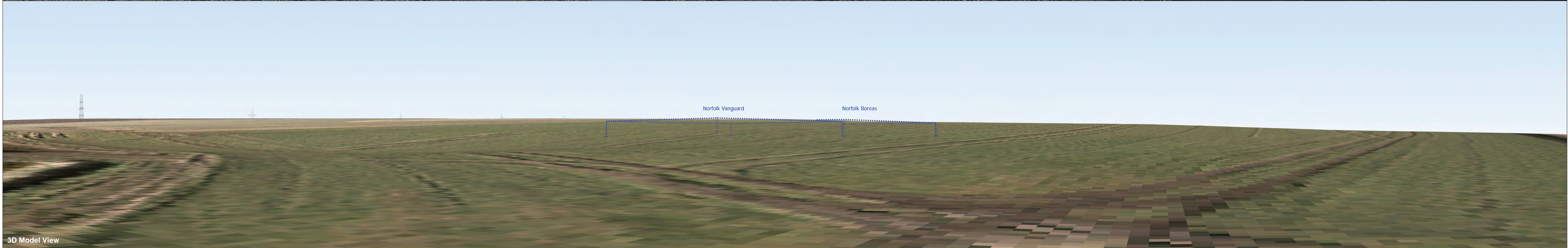
Title: Scenario 1
Viewpoint 8:
Chapel Road, Necton

Figure: 29.30a	Drawing No: PB5640-006-029-030				
Revision:	Date:	Drawn:	Checked:	Size:	Scale:
01	14/02/2019	LA	JP	A3	Multiple
02	21/02/2019	LA	JP	A3	Multiple

Co-ordinate system: British National Grid EPSG: 27700

© Vattenfall Wind Power Ltd 2019.
© Crown copyright and database rights 2019 Ordnance Survey 0100031673
Source: Esri, DigitalGlobe, GeoEye, Earthstar Geographics, CNES/Airbus DS, USDA, USGS, AeroGRID, IGN, and the GIS User Community





OS reference: 588605 E 309699 N
 Eye level: 54.9 m AOD
 Direction of view: 68°
 Nearest substation: 1.4 km

Horizontal field of view: 90° (cylindrical projection)
 Principal viewing distance: 522 mm

Camera: Canon EOS 5D Mark II
 Lens: 50mm (Canon EF 50mm f/1.4)
 Camera height: 1.5 m AGL
 Date and time: 25/01/2018, 12:33:28

SCENARIO 1
 Figure: 29.30b
 Viewpoint 8: Chapel Road, Necton



Photomontage of the proposed Norfolk Boreas and Norfolk Vanguard HVDC Substations with mitigation planting (15 years growth)

View flat at a comfortable arm's length

OS reference:	588605 E 309699 N	Horizontal field of view:	53.5° (planar projection)	Camera:	Canon EOS 5D Mark II
Eye level:	54.9 m AOD	Principal viewing distance:	812.5 mm	Lens:	50mm (Canon EF 50mm f/1.4)
Direction of view:	68°	Paper size:	841 x 297 mm (half A1)	Camera height:	1.5 m AGL
Nearest substation:	1.4 km	Correct printed image size:	820 x 260 mm	Date and time:	25/01/2018, 12:33:28